

# ICH INTERLOC - AECW CUTTERHEADS

\* Assembles with shanks, extensions and reducers \*

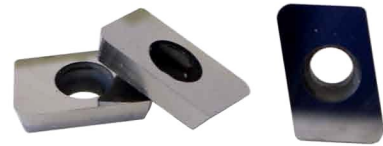
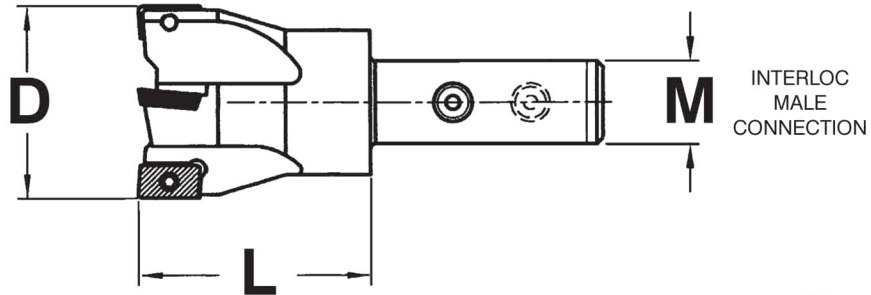
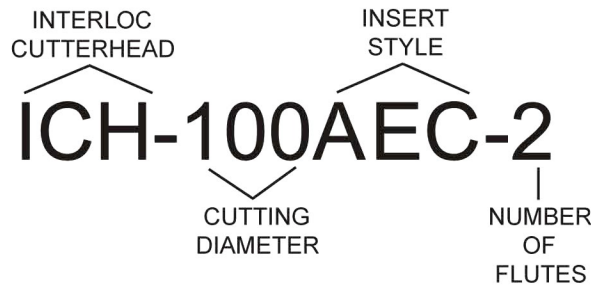
"INTERLOC DRIVE SYSTEM"

**NEW!**

## High Performance Aluminum Cutters



<b>CUTTING STYLE</b>
Face Milling, Shoulder Cutting, Grooving, & Pocket Cutting
<b>APPLICATIONS</b>
Roughing, Semi-finishing, & Finishing



★ REF. SPEED & FEED  
 2.000 CUTTING DIAMETER 3 FLUTE  
 3,000 R.P.M.  
 .200 DEPTH OF CUT  
 300 I.P.M.

- ❖ Cooling through shanks available
- ◆ Custom sizes available

### AECW INSERTS

CATALOG NUMBER	WIDTH (W)	LENGTH (L)	RADIUS (R)	AVAILABLE GRADES
AECW-422	0.360	0.625	0.0312	TI-8J
AECW-424			0.0625	
AECW-428			0.1250	

CATALOG NUMBER	INTERLOC MALE CONNECTION (M)	EFFECTIVE CUTTING DIAM. (D)	LENGTH (L)	NUMBER OF FLUTES	INSERT NUMBER	LOCK SCREW #	TORX WRENCH #
ICH-100AEC-2	M100 INTERLOC	1.000	1.500	2	AECW-432 TO	TS-75BS	T-15
ICH-125AEC-2	M125 INTERLOC	1.250			AECW-438	TS-75B	
ICH-200AEC-3	M200 INTERLOC	2.000		3			

# THP - AECW SHELL MILL CUTTERS

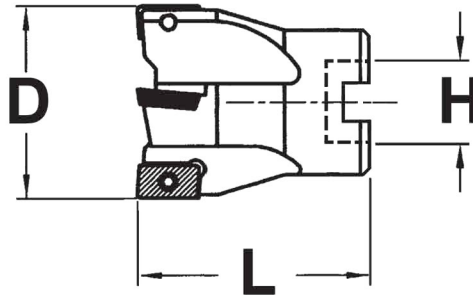
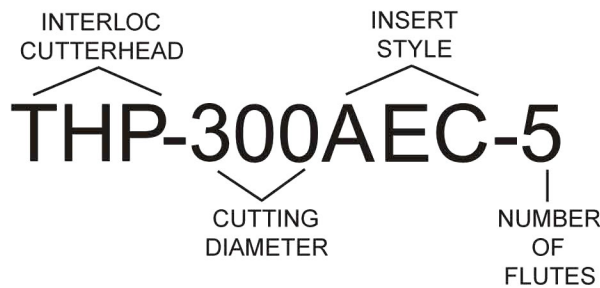
\* Assembles with facemill extensions \*

"INTERLOC DRIVE SYSTEM"

**NEW!**

## High Performance Aluminum Cutters

<b>CUTTING STLYE</b>
Face Milling, Shoulder Cutting, Grooving, & Pocket Cutting
<b>APPLICATIONS</b>
Roughing, Semi-finishing, & Finishing



★ REF. SPEED & FEED  
 2.000 CUTTING DIAMETER 3 FLUTE  
 3,000 R.P.M.  
 .200 DEPTH OF CUT  
 300 I.P.M.

- ❖ Cooling through available
- ◆ Custom sizes available

AECW INSERTS				
CATALOG NUMBER	WIDTH (W)	LENGTH (L)	RADIUS (R)	AVAILABLE GRADES
AECW-422	0.360	0.625	0.0312	TI-8J
AECW-424			0.0625	
AECW-428			0.1250	

CATALOG NUMBER	EFFECTIVE CUTTING DIAM. (D)	HOLE DIAMETER (H)	LENGTH (L)	NUMBER OF FLUTES	INSERT NUMBER	LOCK SCREW #	TORX WRENCH #
THP-300AEC-5	3.000	1.250	2.500	5	AECW-432 TO AECW-438	TS-75B	T-15
THP-400AEC-5	4.000	1.500		6			
THP-400AEC-6							